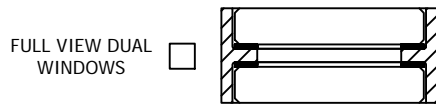
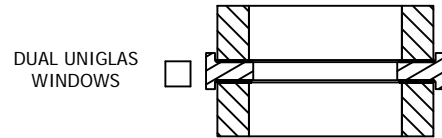
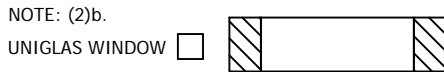
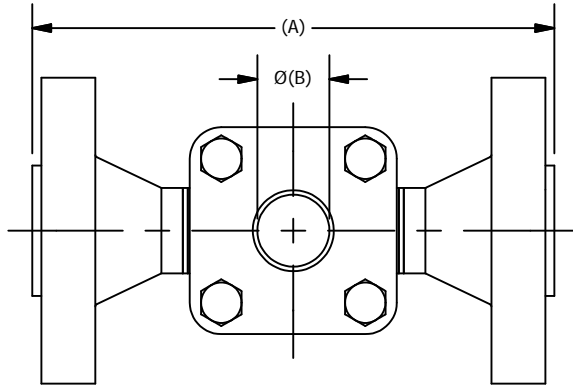


THIS DRAWING AND ALL INFORMATION ON IT IS THE PROPERTY OF THE CLARK-RELIANCE CORPORATION. IT IS CONFIDENTIAL AND IS GIVEN TO YOU FOR A LIMITED PURPOSE AND MUST BE RETURNED UPON REQUEST. NEITHER THIS DRAWING NOR ANY PART OF IT NOR ANY INFORMATION CONCERNING IT MAY BE COPIED, EXHIBITED OR FURNISHED TO OTHERS NOR MAY PHOTOGRAPHS BE TAKEN OF ANY ARTICLE FABRICATED OR ASSEMBLED FROM THIS DRAWING WITHOUT CONSENT OF THE CLARK-RELIANCE CORPORATION.

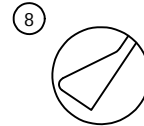
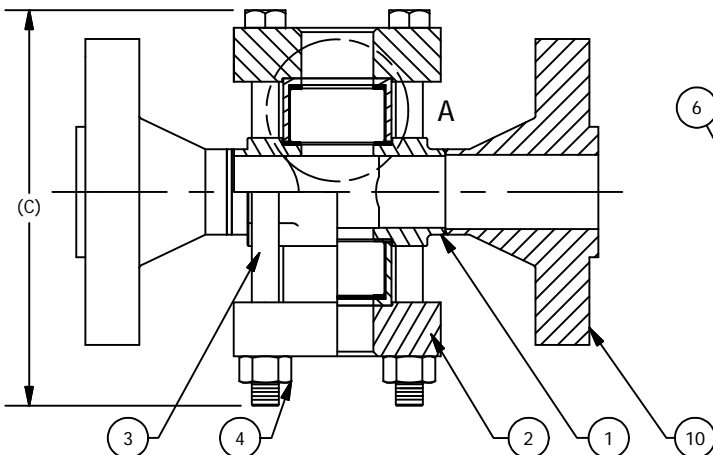
**JACOBY-TARBOX**  
A Product of the Clark-Reliance Corporation  
16633 FOLTZ PARKWAY  
STRONGSVILLE, OH 44149 USA  
PH: +1 440-572-1500  
www.clark-reliance.com

**SIGHT FLOW INDICATOR  
MODEL F-910HPA-900/1500 &  
F-960HPA-900/1500 &  
F-608HPA-900/1500 W/ FLANGES**

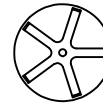
SECTION: T400  
BULLETIN: T400.21  
DATE: 10/31/2017  
SUPERSEDES: 09/01/03  
FILE NO.: T400-21.DWG  
DRAWN: MWS | CHECKED: DEP  
SCALE: NONE



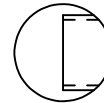
**FM**  
APPROVED



FLAPPER  
F-910HPA-900/1500



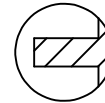
ROTOR  
F-960HPA-900/1500



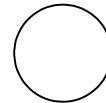
DRIP TUBE  
F-608HPA-900/1500



GAS INDICATOR  
F-910HPA-900/1500-GI



FLUTTER  
F-910HPA-900/1500-FLTR



NO INDICATOR  
F-910HPA-900/1500(NF)

PARTS LIST			
PIECE NO.	PART NAME	QTY.	STANDARD DESIGN MATERIALS
1	BODY (SEE NOTE (1))	1	ASTM A216-WCB (CARBON STEEL) ASTM A351-CF8M (316 SS)
2	RETAINER (1)	2	ASTM A216-WCB (CARBON STEEL) ASTM A516 GR.70 (CARBON STEEL)
3	BOLT (1)	4	ASTM A354-BD (ALLOY STEEL)
4	NUT (1)	4	ASTM A194-2H (ALLOY STEEL)
5	WINDOW (2)	2	TEMPERED BOROSILICATE
6	SEAL GASKET (3)	2	FIBER
7	CUSHION GASKET	6	FIBER
8	INDICATOR	1	DRIP TUBE (316SS)   FLUTTER (PTFE)   FLAPPER (316SS)   ROTOR (PTFE)   GAS INDICATOR (PTFE)
9	WINDOW HOLDER(1)	2	(CARBON STEEL) (316 SS)
10	FLANGE (1&4)	2	ASTM A105-WCB (CARBON STEEL) ASTM A182 GR.70 (316 SS)

NOTES (REFERENCE PARTS LIST)

(1) ADDITIONAL ALLOYS AVAILABLE PER REQUEST  
(2) a. OPTIONAL MATERIALS AVAILABLE PER PROCESS CONDITIONS  
b. ADDITIONAL WINDOW OPTIONS AVAILABLE SEE SIDE SECTION FOR DETAILS  
(3) COMMON OPTIONAL SEAL MATERIALS AVAILABLE  
 PTFE  GRAPHITE  
(4) FLANGE TO MATCH BODY MATERIAL

DESIGNED IN ACCORDANCE WITH ASME B31.1 & B31.3 FOR PRESSURE VERSUS TEMPERATURE RATINGS USING ONLY LISTED METALS IN FABRICATION

ASME CL9 PRESSURE / TEMP RATINGS PSIG / °F (BAR / °C)			
TEMP °F (°C)	PRESSURE		
	STEEL	316 SS	
-20 TO 100	2220 (153)	2160 (149)	
150 (66)	2128 (147)	2010 (139)	
200 (93)	2035 (140)	1860 (128)	
250 (121)	2000 (138)	1770 (122)	
300 (149)	1965 (136)	1680 (116)	
350 (177)	1933 (133)	1610 (111)	
400 (204)	1900 (131)	1540 (106)	
450 (232)	1855 (128)	1488 (103)	
500 (260)	1810 (125)	1435 (98.9)	

ASME CL15 PRESSURE / TEMP RATINGS PSIG / °F (BAR / °C)			
TEMP °F (°C)	PRESSURE		
	STEEL	316 SS	
-20 TO 100	3705 (256)	3600 (248)	
150 (66)	3550 (245)	3348 (231)	
200 (93)	3395 (234)	3095 (213)	
250 (121)	3333 (230)	2945 (203)	
300 (149)	3270 (226)	2795 (193)	
350 (177)	3220 (222)	2683 (185)	
400 (204)	3170 (219)	2570 (177)	
450 (232)	3093 (213)	2480 (171)	
500 (260)	3015 (208)	2390 (165)	

FOR TEMPERATURES ABOVE 500°F (260°C) REFER TO ASTM B16.5 FOR PRESSURE RATINGS

NPT SIZE	A (RF)		A (RTJ)		B		C		APPROX. WEIGHT	
	IN	mm	IN	mm	IN	mm	IN	mm	LBS	KGS
½" 900	9.75	248	9.75	248	1.06	27	6.50	165	27.20	12.34
							7.50	191		
½" 1500	10.50	267	10.50	267	1.06	27	6.50	165	27.20	12.34
							7.50	191		
¾" 900	11.13	283	11.13	283	1.25	32	8.00	203	33.60	15.24
							8.00	203		
1" 900	12.25	311	12.25	311	2.00	51	10.00	254	52.40	23.77
							10.50	267		
1¼" 900	13.00	330	13.00	330	2.00	51	10.00	254	60.48	27.43
							10.50	267		
1½" 900	14.50	368	14.63	368	2.00	51	10.00	254	82.40	37.38
							10.50	267		

(\* ) STANDARD BOLT LENGTH SHOWN. OPTIONAL WINDOW MATERIALS OR USE OF STUDS MAY INCREASE LENGTH FOR SINGLE WINDOW (1 PER SIDE) TEMPERED GLASS.