

OPTION	A
W/O STEAM COMPENSATION	8" [203]
W/ STEAM COMPENSATION	18" [457]

- SHOWN IN INCHES W/ MM EQUIVALENTS IN BRACKETS
- OVERALL LENGTH = CENTERS + FLOAT LENGTH + 2 * MATING FLANGE THICKNESS + 8.25" [210]

OPERATING CONDITIONS

- MAX PRESSURE, MAX TEMPERATURE, & MIN SPECIFIC GRAVITY REQUIRED FOR PROPER GAGE DESIGN

- CONSULT "MAGNicator® MAGNETIC LIQUID LEVEL INDICATION PRODUCTS" (BULLETIN M100.01) FOR COMPLETE PART NUMBER DETAILS & LIST OF AVAILABLE OPTIONS

- 2 ½" [65] SCH. 40 (STANDARD) MAG STANDPIPE / 3" [80] SCH. 40 (STANDARD) BY-PASS STANDPIPE
- CONSULT FACTORY FOR OPTIONAL STANDPIPE SIZE AND/OR SCHEDULE (DEPENDENT ON OPERATING CONDITIONS)

- 304/304LSS W/ CS TRIM (FLANGES, BOLTING, & PLUGS) (STANDARD)
- 316/316LSS W/ CS TRIM (FLANGES, BOLTING, & PLUGS) (STANDARD)
- ALL 304/304LSS (316SS BOLTING) (STANDARD)
- ALL 316/316LSS (316SS BOLTING) (STANDARD)
- CONSULT "MAGNIFICATOR® MAGNETIC LIQUID LEVEL INDICATION PRODUCTS" (BULLETIN M100.01) FOR A COMPLETE LIST OF AVAILABLE MATERIALS

- 316LSS (STANDARD)
- TITANIUM (STANDARD)
- MONEL 400
- HASTELLOY C276

- 12" [305] (STANDARD)
- 17" [432] (STANDARD)
- 22" [559] (STANDARD)
- LENGTHS DEPENDENT ON OPERATING CONDITIONS
- CONSULT FACTORY FOR CUSTOM LENGTHS

- FLEXITALLIC "CGI" (OR EQUAL) SPIRAL-WOUND (STANDARD) W/ CS OUTER RING, 304 OR 316SS INNER RING, & GRAPHITE FILLER
- CONSULT FACTORY FOR OPTIONAL GASKET MATERIALS

- ½" [15] THRU 1" [25] FNPT & MNPT (STANDARD)
- 1 ½" [40] THRU 6" [150] FNPT & MNPT AVAILABLE ON REQUEST
(REQUIRE FITTINGS THAT INCREASE SECTION A-A DIMENSION SHOWN)
- (2) SIDE CONNECTIONS (STANDARD)
- (2+) SIDE CONNECTIONS AVAILABLE ON REQUEST

- ½" [15] FNPT (SHOWN) (STANDARD)
- ½" [15] THRU 1 ½" [40] FNPT, MNPT, FSW, & MSW
- ½" [15] TO 3" [80] RAISED-FACE ANSI/ASME & DIN FLANGED

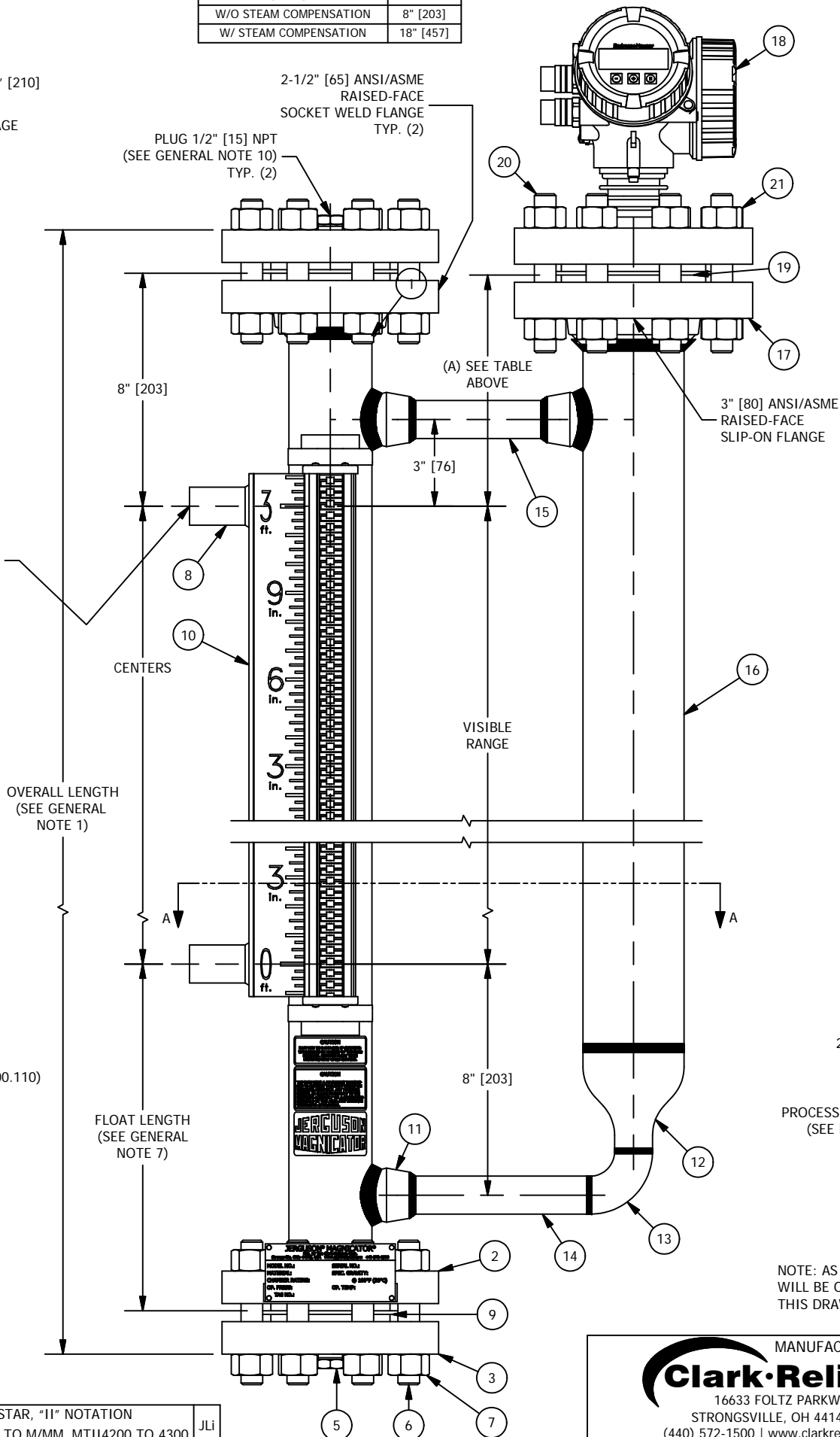
- YELLOW / BLACK FLAGS IN ALUMINUM HOUSING (SHOWN) (STANDARD)
- HERMETICALLY-SEALED FLAGS IN POLYCARBONATE TUBE W/ 316SS FRAME (BULLETIN M100.110)
- HERMETICALLY-SEALED FLAGS IN GLASS TUBE W/ 316SS FRAME (BULLETIN M100.110)
- NIGHTSTAR™ (ILLUMINATED FLAGS) (120 OR 240 VAC) (BULLETIN M100.140)

- FEET / INCHES (SHOWN) (STANDARD)
- METER / MILLIMETER
- PERCENT
- CONSULT FACTORY FOR SPECIAL SCALES

- SAS-16 TRI-MAGNET (BULLETIN M100.27)
- RS-2 (SPDT) HERMETICALLY-SEALED REED (BULLETIN M100.20)
- RS-2/2 (DPDT) HERMETICALLY-SEALED REED (BULLETIN M100.20)

- GUIDED WAVE RADAR
- MTII-4300 MAGNETOSTRICTIVE (BULLETIN M100.23)
- RST2 REED SWITCH (BULLETIN M100.22)

2	4/27/2018	DELETE LEVELSTAR, "II" NOTATION METRIC SCALE TO M/MM, MTII4200 TO 4300	JLi
REV	DATE	REVISION	BY

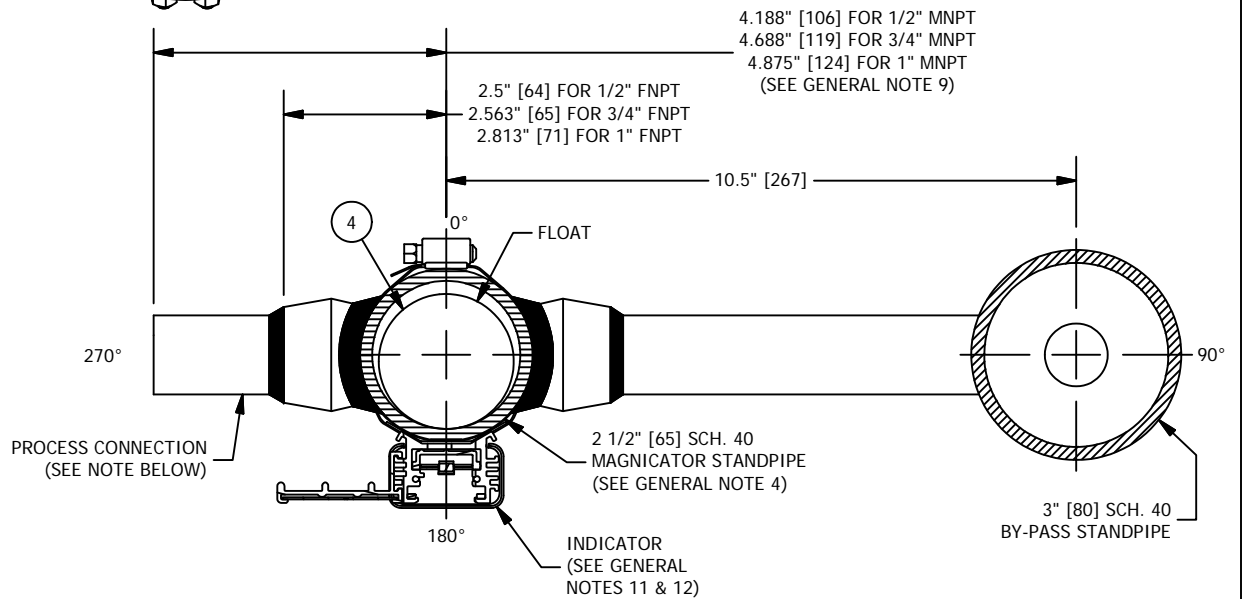


NOTE: AS STANDARD, PROCESS CONNECTIONS WILL BE ORIENTED AT 0°. THEY ARE SHOWN IN THIS DRAWING AT 90° FOR EASE OF VIEWING.



NO.	NAME OF PART	MATERIAL	REMARKS
1	MAGNIFICATOR STANDPIPE		
2	FLANGE, SOCKET WELD		
3	FLANGE, THREADED		
4	FLOAT		
5	PLUG		
6	STUD		
7	HEAVY HEX NUT		
8	PROCESS CONNECTION		
9	GASKET		
10	INDICATOR		
11	PIPET		
12	REDUCER, CONCENTRIC		
13	ELBOW		
14	STANDPIPE NIPPLE		
15	STANDPIPE NIPPLE		
16	BY-PASS STANDPIPE		
17	FLANGE, SOCKET WELD		
18	GUIDED WAVE RADAR, FLANGED		
19	GASKET		
20	STUD		
21	HEAVY HEX NUT		

MAX PRESSURE	
MAX TEMPERATURE	
MIN SPECIFIC GRAVITY	
PROCESS FLUID	



SECTION A-A

<div>JERGUSON®</div> <div>MODEL MGWR-EST</div> <div>MAGNIFICATOR COUPLED WITH BY-PASS CHAMBER</div> <div>FOR GUIDED WAVE RADAR TRANSMITTER</div> <div>(W/ 600-2500# ANSI/ASME FLANGES)</div>	DRAWN: SSF	
	CHECKED: MK	
	DATE: 1/23/2014	
	REVISION: 2	
	DRAWING NO.:	REV.:
	MGWR-EST6	2