

All Anderson Line Separators are designed to eliminate all liquid entrainment of 8-10 microns or larger from air, gas, steam and vapor pipelines without causing any significant pressure drop.

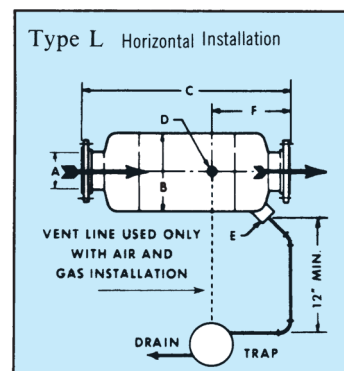
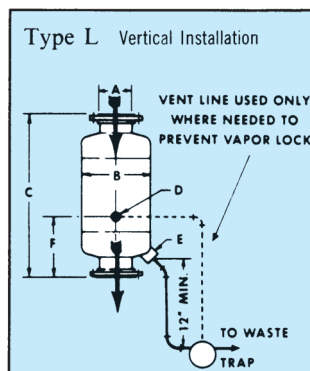
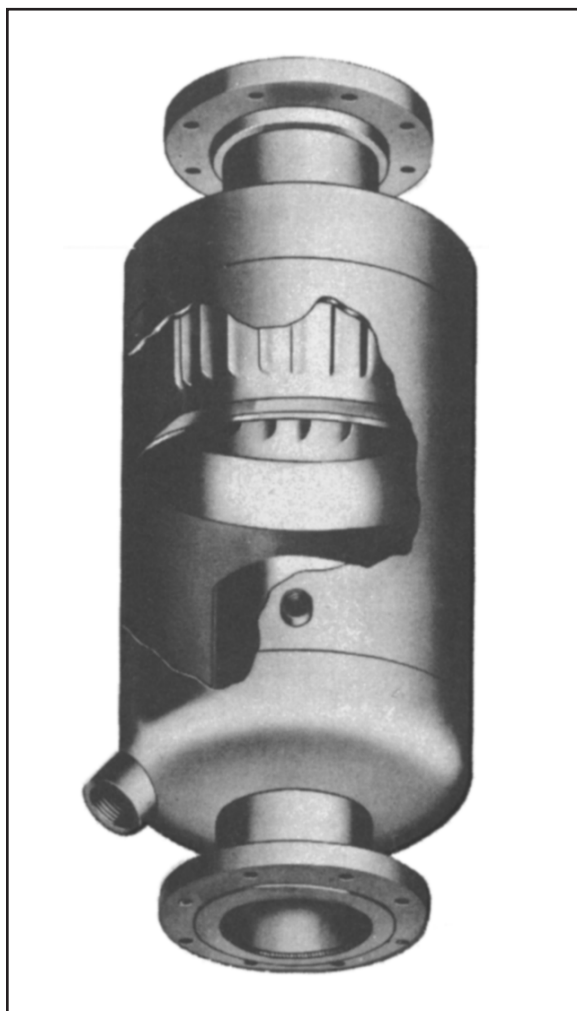
Line Type Separators operate on a patented two stage principle of separation that employs carefully controlled flow guiding the entrainment laden vapor through a series of vanes and baffles. Each component of the separating element is designed to obtain maximum separating efficiency. Briefly, in the first stage of the separation, impingement against a baffle removes

the larger droplets of entrainment.

In the second stage of separation, the separator removes the fine mist entrainment by utilizing centrifugal scrubbing action through a uniquely designed contact element. In each stage, the gas medium and the separated liquid are carefully and continuously guided for maximum efficiency. The separators are designed to handle large volume flow of a broad range of fluids. Self-cleaning and engineered without filters or moving parts, the separators are free from maintenance and repair.

Type L Separators

Type L Separators from 2½" to 10" pipe sizes are available from stock in both 150 and 300 PSIG ratings.



Separators have forged steel flanges, welded steel bodies and stainless steel element blades.

Dimensions in inches

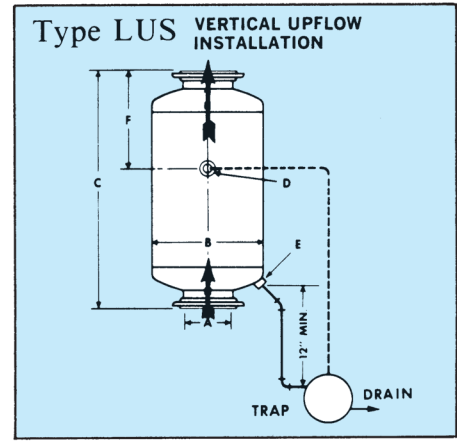
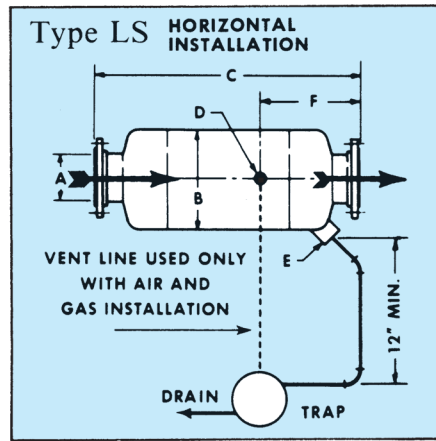
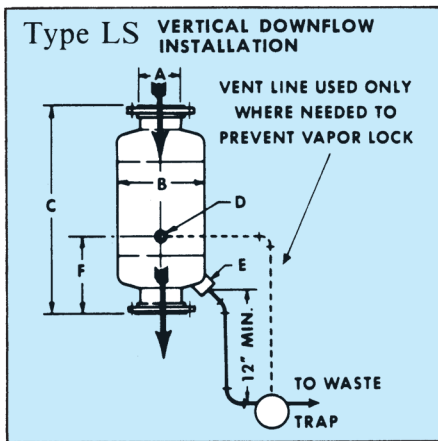
150 and 300 PSIG LINE SEPARATORS							
Type		L-2½	L-3	L-4	L-5	L-6	L-10
Nominal Pipe Size	A	2½	3	4	5	6	8
Diameter	B	6½	8½	10¾	12¾	14	16
Length	C	19	22	26	30	34	44
Vent Size	D	½	½	½	½	½	¾
Drain Size	E	1	1½	1½	2	2	2½
Vent Location	F	7½	8½	9¼	10½	12	16
Shipping Weight Lbs.							
		150#	150#	150#	150#	150#	150#
		51	75	110	162	175	272
		300#	54	84	140	200	234
							412
							724

All vessels are designed, built, and stamped to ASME Code for Unfired Pressure Vessels.

Line Type LS and LUS Separators

Type LS and LUS Separators are custom designed and built in accordance with Purchaser's flow requirements and material specifications.

All vessels are designed, built, and stamped to ASME Code or Unfired Pressure Vessels.



* Dimensions in inches

Type LS	2½	3	4	5	6	8	10	12	14	16	18	20	22	24	26	28	30	33	36
Nominal Pipe Size . A	2½	3	4	5	6	8	10	12	14	16	18	20	20	24	24	28	30	30	36
Diameter B	6¾	8¾	10¾	12¾	14	16	20	24	24	30	30	36	42	42	48	48	54	60	66
Length C	19	22	26	30	34	44	52	66	72	78	90	96	108	118	128	136	150	162	174
Vent Size D	½	½	½	½	½	¾	¾	¾	¾	¾	¾	¾	¾	¾	¾	¾	¾	¾	¾
Drain Size E	1	1½	1½	2	2	2	2½	2½	2½	2½	3	3	3	4	4	4	4	4	4
Vent Location F	7¾	8¾	9¾	10½	12	16	19½	23	24	30	34	36	36	42	46	50	53	56	61
Shipping Weight Lbs.	Upon Application																		

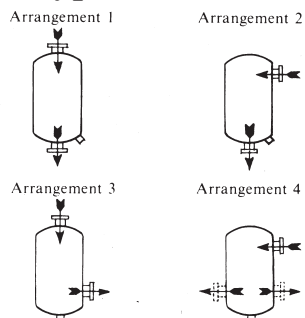
* Dimensions in inches

Type LUS	2½	3	4	5	6	8	10	12	14	16	18	20	22	24	26	28	30	33	36
Nominal Pipe Size .. A	2½	3	4	5	6	8	10	12	14	16	18	20	20	24	24	28	30	30	36
Diameter B	8¾	10¾	12¾	14	14	16	20	24	24	30	30	36	42	42	48	48	54	60	66
Length C	20	22	26	30	34	44	52	66	72	78	90	96	114	114	132	138	150	162	174
Vent Size D	½	½	½	½	½	¾	¾	¾	¾	¾	¾	¾	¾	¾	¾	¾	¾	¾	¾
Drain Size E	1	1½	1½	2	2	2	2½	2½	2½	2½	3	3	3	4	4	4	4	4	4
Vent Location F	12	12	16	18	11	12	14	18	20	22	25	27	29	32	34	38	40	43	48
Shipping Weight Lbs.	Upon Application																		

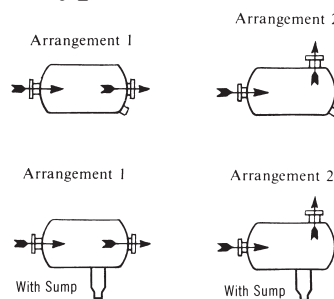
* Dimensions listed are for 150 PSIG carbon steel vessels and will vary with pressure and materials of construction.

LS and LUS Separator Nozzle Options

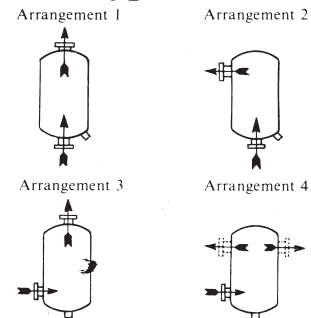
Type LS Vertical



Type LS Horizontal



Type LUS



ANDERSON™ SEPARATOR COMPANY

A Division Of The Clark•Reliance Corporation

A.S.M.E. CODE STAMPS



16633 FOLTZ INDUSTRIAL PARKWAY • STRONGSVILLE, OHIO 44149 • USA
TELEPHONE: (440) 572-1500 • FACSIMILE: (440) 238-8828 • www.clark-reliance.com

