

RFQ and Purchase Order Specification Work Sheets

Section: R406.026
Date: 6/10/2020
Supersedes: NEW
Page 1

Float and Probe Type Levalarms



Please complete all information fields in this worksheet and submit with your RFQ (Request For Quote) or Purchase Order. The use of these worksheets has proven to greatly decrease Engineering time and virtually eliminate specification errors.

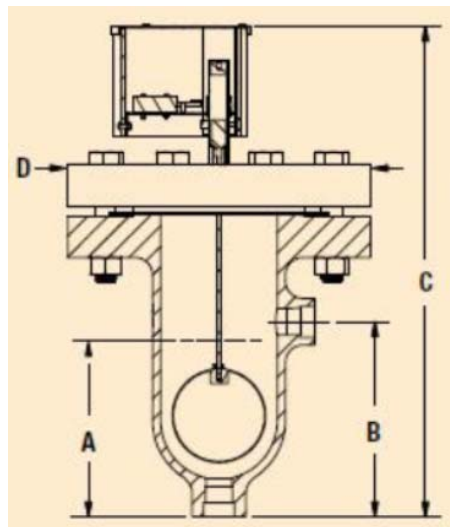
Reliance®
A PRODUCT OF CLARK-RELIANCE

16633 Foltz Parkway • Strongsville, OH 44149 USA
Telephone: +1 (440) 572-1500
www.clark-reliance.com • RelianceAppEng@clark-reliance.com

**Must accompany P.O with all fields
completed**

Customer: _____	Contact Name: _____
Project Name: _____	E-mail: _____
Project Location: _____	Phone Number: _____
Date: _____	RFQ/P.O. Number: _____

Levalarm Gold



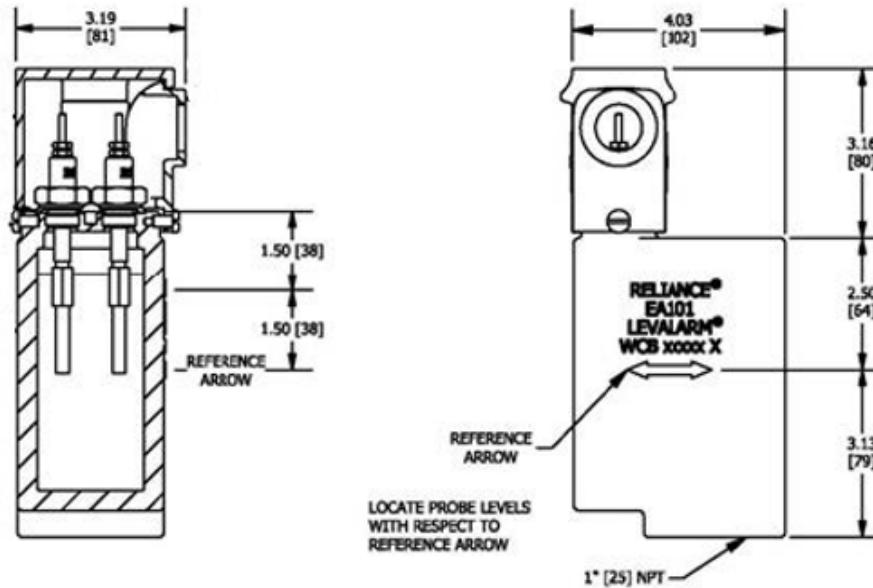
Model	A-Actuation	B-Connections	C-Height	D-Width	Weight-lb (kg)
EA100G-150	6.08 (155)	6.41 (163)	16.87 (428)	9.00 (229)	46 (20.8)
EA100G-300	6.00 (152)	6.51 (165)	17.40 (442)	10.00 (254)	65 (29.5)
EA100G-600	7.51 (191)	8.35 (212)	21.00 (533)	13.00 (330)	157 (71.2)*

* Structural support is required for this model, to be determined by installer

Agency Approvals	UL 353 and FM 7710
Connection Sizes	EA100G-150: 1" FNPT EA100G-300/EA100G-300SW: 1" FSW EA100G-600/EA100G-600SW: 1" FSW
Pressure Rating (MAWP = Maximum Allowable Working Pressure)	EA100G-150: 200 psi (13.8 Bar) MAWP EA100G-300/EA100G-300SW: 500 psi (34.5 Bar) MAWP EA100G-600/EA100G-600SW: 1000 psi (69 Bar) MAWP

- ☐ EA100G-150 - 1" FNPT Connections
- ☐ EA100G-300 - 1" FNPT Connections
- ☐ EA100G-300 - 1" FSW Connections
- ☐ EA100G-600 - 1" FNPT Connections
- ☐ EA100G-600 - 1" FSW Connections

EA101 Series Levalarms



- ☐ EA101D - 1" FNPT Connections – w/"T" probe – Max. pressure 450 PSI (13.8 Bar)
- ☐ EA101S - 1" FNPT Connections – w/"V" probe – Max. pressure 1000 PSI (69 Bar)
- ☐ EA101SW - 1" FSW Connections – w/"V" probe – Max. pressure 1000 PSI (69 Bar)
- ☐ EA101S - 1" FNPT Connections – w/"ZG" probe – Max. pressure 1000 PSI (69 Bar)
- ☐ EA101SW - 1" FSW Connections – w/"ZG" probe – Max. pressure 1800 PSI (124 Bar)
- ☐ 1 Probe model ☐ 2 Probe model (Note: Max probe range is 3")
- ☐ Bottom Side Connection

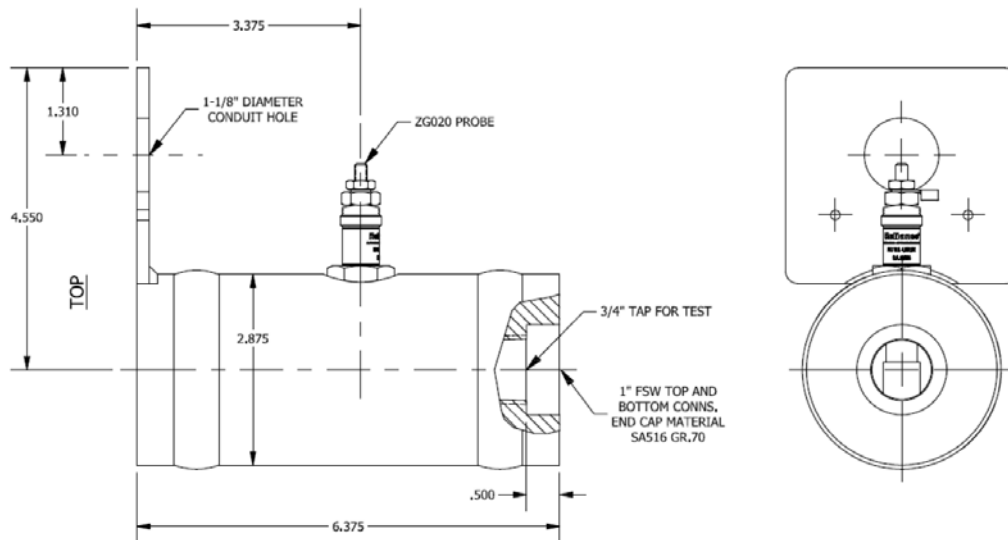
Relay Control Units

- ☐ R110L - One Relay in NEMA 1 Enclosure
- ☐ R140L - One Relay in NEMA 4 Weatherproof Enclosure
- ☐ R170L - One Relay in NEMA 7 Explosionproof Enclosure
- ☐ R210L - Two Relays in NEMA 1 Enclosure
- ☐ R240L - Two Relays in NEMA 4 Weatherproof Enclosure
- ☐ R270L - Two Relays in NEMA 7 Explosionproof Enclosure
- ☐ Intrinsically Safe Barriers for Classified Area Locations

Side Probe EA101 Models

(Used for Canadian Applications)

- ☐ EL450-1WP with one “T” Probe - Max. Pressure 450 PSI (13.8 Bar)
 - ☐ 1” FNPT conns.
 - ☐ 1” FSW conns.
- ☐ EL1000-1WP with one “V” Probe - Max. Pressure 1000 PSI (69 Bar)
 - ☐ 1” FNPT conns.
 - ☐ 1” FSW conns.
- ☐ EL1800-1WP with one “ZG” Probe - Max. Pressure 1800 PSI (124 Bar)
 - ☐ 1” FSW (NPT conns. not available)



Typical Unit - EL1800-1WP is shown

Relay Control Units

- ☐ R110L - One Relay in NEMA 1 Enclosure
- ☐ R140L - One Relay in NEMA 4 Weatherproof Enclosure
- ☐ R170L - One Relay in NEMA 7 Explosionproof Enclosure
- ☐ Intrinsically Safe Barriers for Classified Area Locations

RetroPak Caps

Water Column

Model number: _____ Drawing Number (if known) _____

Design Pressure: _____

Probes Required (Max. of 6 including Common Probe):

☐ HWCO ☐ HWA ☐ LWA ☐ LWCO ☐ Other (specify) _____

Note: All probes will be furnished at maximum length for field trimming unless otherwise specified.

To Convert a non-Clark-Reliance Column to Probe Type

Water Column

Model number: _____ Column manufacturer: _____

Design Pressure: _____

Probes Required (Max. of 6 including Common Probe dependent on flange size and type):

☐ HWCO ☐ HWA ☐ LWA ☐ LWCO ☐ Other (specify) _____

Note: All probes will be furnished at maximum length for field trimming unless otherwise specified.

Required dimensions:

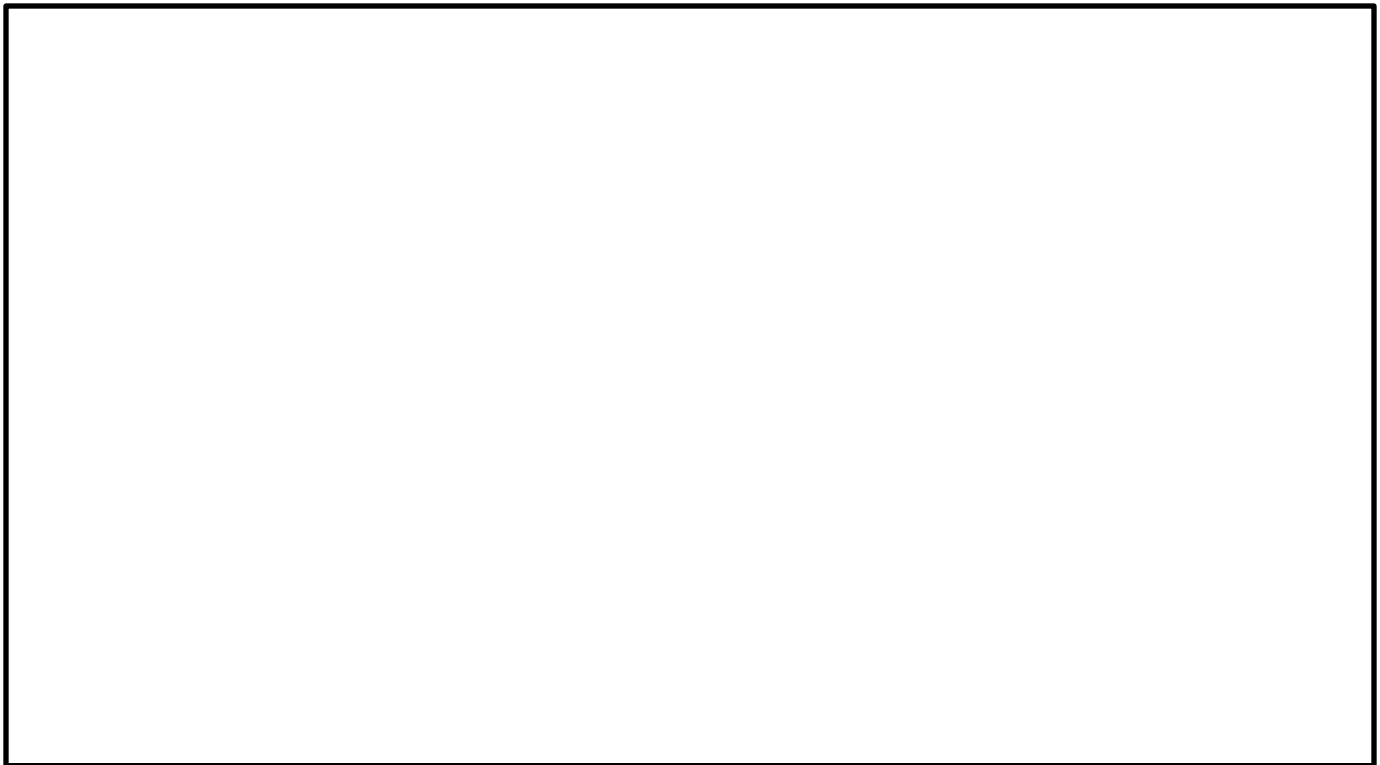
Flange O.D.: _____ Flange Thickness: _____

Flange Face Type: _____ If R.F. diameter of raised face: _____

Height of raised face: _____ If not raised face, list dimensions below:

Bolt circle: _____ Diameter of Bolt Holes: _____

Number of bolt holes required: _____



Sketch of special flange

Model	Application	Functions	Material	Connections	Max Pressure	Switch Rating
EA100G-150	Boilers, Tanks, & Water Columns	High or Low Alarm, Fuel Cut-Out, and Pump Controls	SA-216	1" FNPT	200 psi (13.8 Bar) 500 psi (34.5 Bar) 1000 psi (69 Bar)	5A-120 & 240 V AC
EA100G-300 EA100G-600				1" FNPT 1" FSW		
EA101D				1" FNPT	350 psi (24 Bar) 1000 psi (69 Bar)	
EA101S					450 psi (31 Bar) 1000 psi (69 Bar)	
EA101SW				1" FSW	1800 psi (124 Bar)	
EA17/EA18 Retopak	Water Columns	Low Alarm Low Cut Out	SA-516 Gr. 70	Cover Plate	250 psi (17.25 Bar) Cast Iron 900 psi (62 Bar) Steel	
EA100DRPT	EA100D				350 psi (24 Bar)	
EA100SRPV	EA100S EA100SW				800 psi (55 Bar)	

Additional notes:
