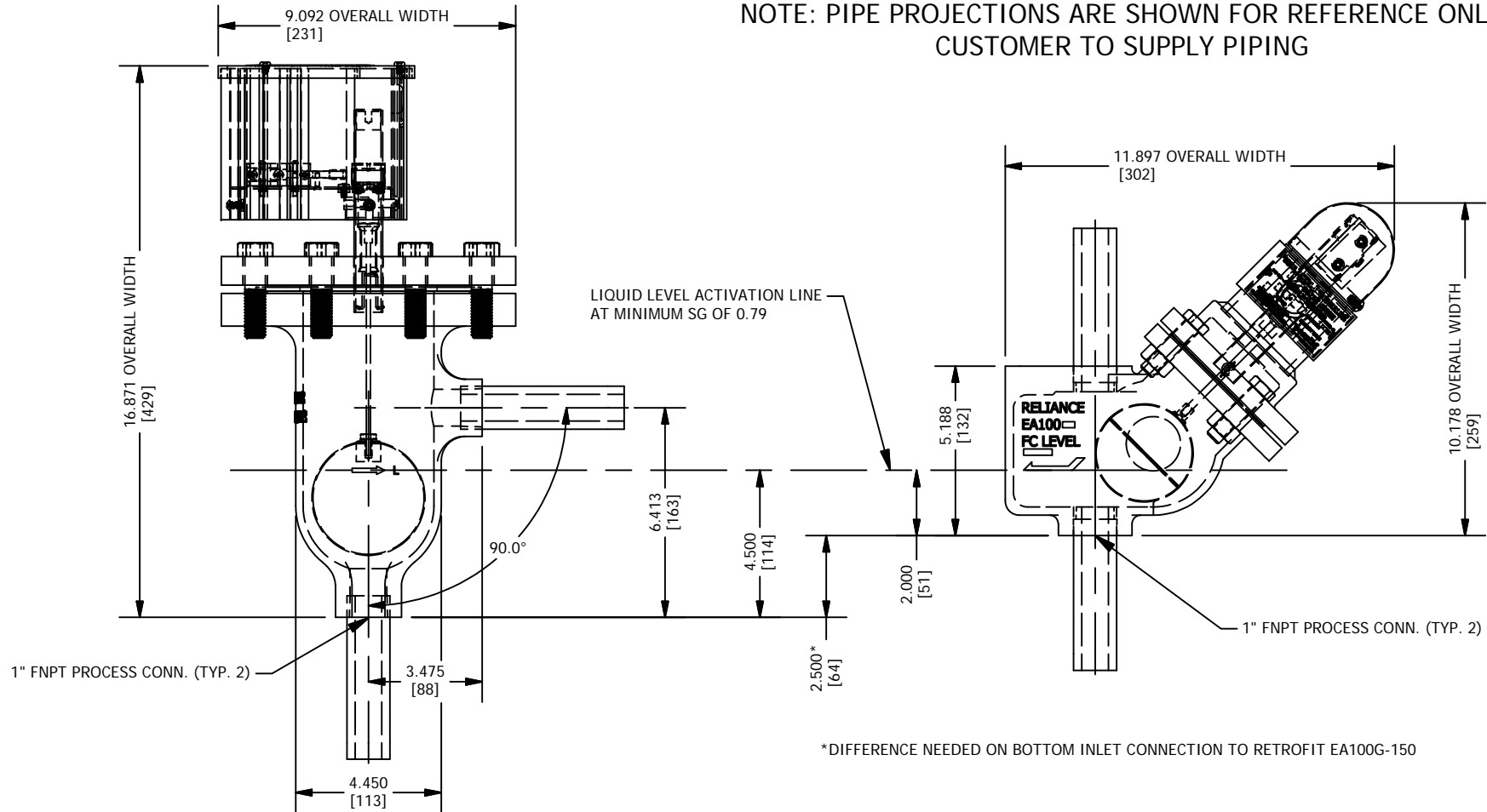


NOTE: PIPE PROJECTIONS ARE SHOWN FOR REFERENCE ONLY
CUSTOMER TO SUPPLY PIPING



MODEL NUMBER EA100G-150

NOTES:

1. MICRO SWITCH APPROVED FOR THE FOLLOWING RATINGS:
5A-125, 250, OR 480 VAC
1/2A - 125 VDC
1/4A - 250 VDC
2. UNITS IN INCHES W/ MM EQUIVALENTS IN BRACKETS
3. MINIMUM SG. = .799
4. MAWP PER B16.5 GROUP 1.1 150 CLASS FLANGE
5. DESIGN PRESSURE: 200 PSI MAWP
6. HYDROTEST PRESSURE: 300 PSI

MODEL NUMBER EA100D

NOTES:

1. MICRO SWITCH, TYPE BZ-2RW82444-A2
UL APPROVED FOR THE FOLLOWING RATINGS:
5A-125, 250, OR 480 VAC
.50A-125 VDC
.25A-250 VDC
2. UNITS IN INCHES W/ MM
EQUIVALENTS IN BRACKETS
3. STATIONARY SERVICE RATING:
MAX PRESSURE: 350 PSI @ 436°F
4. HYDROTEST: 525 PSI

*DIFFERENCE NEEDED ON BOTTOM INLET CONNECTION TO RETROFIT EA100G-150

ALL DIMENSIONS IN INCHES [MM]

1	5/28/2019	ADJUSTED ACTIVATION LEVEL FROM 6.08" TO 4.50"	NK
REV	DATE	REVISION	BY

MANUFACTURED BY
Clark-Reliance®
16633 FOLTZ PARKWAY
STRONGSVILLE, OH 44149 USA
(440) 572-1500 | www.clarkreliance.com
© Clark-Reliance® Corporation. All Rights Reserved.

RELIANCE®

EA100G-150 VS EA100D PIPING CHANGE DIAGRAM

PART NUMBER: REA1345 & REA100D		
TOLERANCE CLASS (PER PES-004): D		
MATERIAL: SEE ORIGINAL DRAWINGS		
REVISION: 1 PER CDC 19-165/NMK		
DRAWN: NK	DRAWING NO.:	REV.:
CHECKED: SRM	EA1364	1
DATE: 8/18/2017		

THIS DRAWING CONTAINS MATERIAL THAT IS CONFIDENTIAL AND/OR PRIVILEGED FOR THE SOLE USE OF THE INTENDED RECIPIENT. ANY REVIEW, RELIANCE OR DISTRIBUTION BY OTHERS OR FORWARDING WITHOUT EXPRESS PERMISSION IS STRICTLY PROHIBITED.